

**James Weldon Johnson
College Preparatory Middle School
Duval County, Florida**



Presenters

- Allyson Popp, Instructional Coach
- Mary Browning, Instructional Specialist

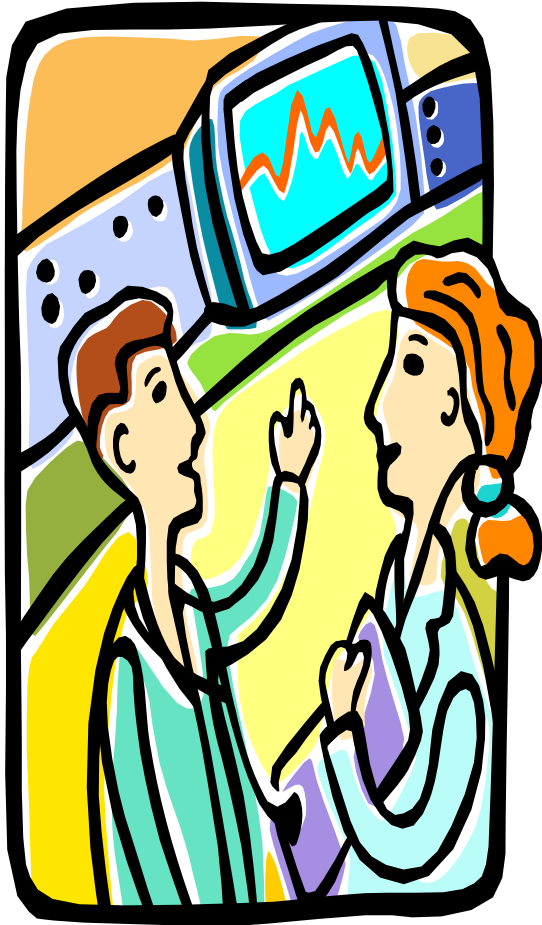


Emergency Room

At

James Weldon Johnson College Preparatory Middle School

Medical History



- We are an academically gifted and talented college preparatory middle school where students are admitted by lottery.
- Therefore, while all our classes are advanced, not all of the students are performing at the advanced level.

Examination Results



- 90% of our students met the state standards, and 10% did not.
- The data indicated that there was no increase in the percentage of students making gains in reading for the total school population for all grade levels.
- The data also indicated that there was a 2% decrease in the lowest 25 % of students making gains in reading for the total school population for all grade levels.

What was our Emergency?

- How do we move the **10%** to at least meet the standard in reading while moving the **90%** to exceed the standard?



Prescription: Develop ER



- ER, a daily 30 minute differentiated reading program written to promote and increase rigor in the middle school curriculum
- The program puts emphasis on higher level reading skills and concepts while developing reading strategies for all learning modalities.

Engaging Readers to Explore Reading

- First, teachers and students need to get to know themselves as learners.
- Next, all of our teachers and students need to be armed with instructional strategies that promote reading and connect to their learning styles in order to go beyond interpreting the meanings of words.
- The ER material needs to be relevant to middle school curriculum and it needs to connect to real world situations.

Procedure: Read Thyself

- Get to know yourself before you get to know your students.
- How do you Operate?
- Modalities

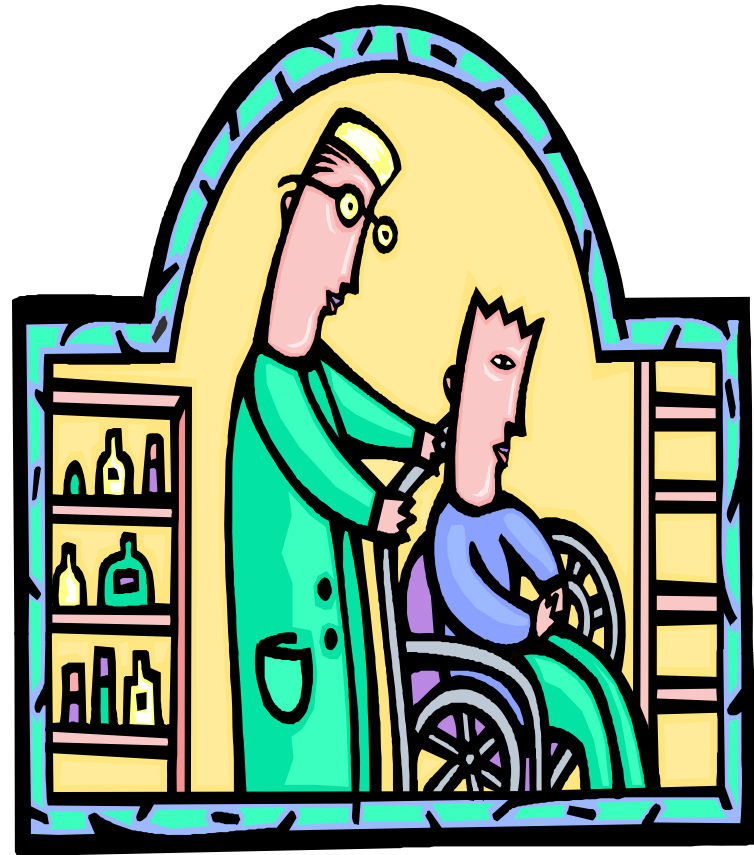
Explore
Your
Modality.

Reading Exercise

- Annotate: Read and **annotate** the assignment for key information to help you make connections and formulate an opinion.
- Paired Readers: Choose a partner. Teacher # 1 reads **orally** paragraph 1 orally to Teacher # 2. Teacher # 2 summarizes the main idea and supportive details. Reverse roles until you are finished reading the assignment.
- Philosophical Chairs: Choose a side and **move** to that part of the room. Move to the speaker's chair when you want to speak. Each side takes turns speaking. You may move to the other side when or if you are persuaded to do so.

Procedure: Read the Patients

- Get to know your students.
- How do they operate?
- Modalities' Websites



Instructional Strategies Matching Learning Styles: Visual, Auditory, and Kinesthetic Learners

Visual

- Annotation
- Two Column Notes
- SQ3R
- Graphic Organizers

Auditory

- Paideia Seminar
- Pairs Read

Kinesthetic

- Philosophical Chairs

Relevant Material

Material should connect to the real world.

- We used local newspaper articles and editorials, and local magazine articles.
- Examples of topics: History of Jacksonville, Architecture and Architects around the city, Superbowl and Jacksonville, Famous Local Authors and Artists, The City Government, The Local Economy, The Environment in Jacksonville, Jacksonville's Fine Arts



How to Set Up Your Emergency Room

1. Determine your reading emergency.
2. Determine your time allotted.
3. Determine your strategies.
4. Determine your materials.
5. Determine your jobs.

Exciting Results



- Increase in Reading Scores
- Collaboration among teachers grew horizontally and vertically
- Students and teachers became aware of how they learned
- Students and teachers learned the best reading instructional strategies for their subject areas.